



Newburgh Primary School

"A caring school where every child matters" (OFSTED)

Headteacher: Mr. A. Smith
B.Ed (Hons), NPQH,
PGCertSEnCo

w/c: 3/4/2017

Tel: (01926) 775453

E: admin2325@welearn365.com

W: www.newburghprimaryschool.co.uk

What's on this week	Monday 3rd April	Tuesday 4th April	Wednesday 5th April	Thursday 6th April	Friday 7th April
Before school 8am-8.55am			Guitar (8.45am)	School Bank 8.30am	
Activities during the school day	Violin (am) Guitar (pm) Y6 visit to Cadbury World	Woodwind (pm) Violin (pm) Brass (am)	Guitar (am/pm)	Y4 Workshops with Severn Trent	Y5DO'D swimming Easter assembly 9am
Lunchtime		Home learning		Y4,5,6 Running Club Y3 Recorders	Home Learning Y4 Ukulele
After school (3.15-4.15pm unless otherwise stated)	<u>NO Girls Choir</u> Y3 Cricket club Y2 Rounders club <u>KS2 Football Club (Mr Smith—one off change of day)</u>	Boys Choir KS2 Netball	<u>NO KS2 Football club</u> Film club 3.15-4.50pm Y4,5,6 Gardening club Change Makers 3.30-5pm YR Tennis Y1,3,5 Forest School club Y4 Let's Get Cooking	<u>NO Orchestra</u> Y6 Art club 3.15-4.30pm <u>NO Girls Football</u> PTA meeting 6.30pm	Fencing Y2 Cricket club Y1 Athletics club

EASTER ACTIVITIES:

We would like to invite children to get involved in our Easter activities again this year. We will be holding an Easter assembly (**for children only**) on Friday 7th April where children will be able to share their creations.

Reception are invited to make an Easter bonnet;

Years 1,2 & 3 are invited to make Easter baskets;

Years 4 & 5 are invited to make 'egg-citing' scenes;

Year 6 are invited to write and decorate an Easter poem which they will be asked to read in front of their peers.

The PTA will be supporting and judging creations after our assembly during the morning of the 7th.

LATENESS:

I have noticed recently that for a few children, lateness is becoming a problem. It seems correct here to remind everyone associated with Newburgh that the bell for morning school goes at 8.55am. Registration takes place immediately once the children have been brought inside. Following this, lessons start straight away. If children miss some or all of the registration session their morning becomes far less organised and they end up playing catch-up with the other children around them. Please ensure that children are on the school grounds for 8.55am so they can begin their day calmly and with their peers. Thank you in advance for your help.

CAR PARKING:

Please can I remind parents not to park in the staff car park at school. As you can appreciate this is a very busy area at either end of the school day, particularly with junior children crossing to it to get into their playground. I do appreciate that parking on the roads around school is difficult, but we really must ask for your help with this.



As Newburgh continues to grow in size the issues around car parking will not reduce. In fact they will only increase. Please consider parking a little distance away from school on one of the neighbouring roads or somewhere suitable and taking a short walk to the school gates. Please do not, however, block driveways for our neighbours.

Please be patient as a road user during these busy times and make sure that children's safety is your principal consideration.

Y5,6 RESIDENTIAL VISITS:

Can we please remind parents to continue making regular instalments towards Year 5 & 6 residential trips taking place in the Summer Term. Instalments can be made via ParentPay as often as convenient, from £10 upwards.





Newburgh Primary School

"A caring school where every child matters" (OFSTED)

Headteacher: Mr. A. Smith B.Ed (Hons), NPQH, PGCertSENCo

w/c: 3/4/2017
Tel: (01926) 775453

E: admin2325@welearn365.com

W: www.newburghprimaryschool.co.uk

Please remember our responsibilities to ourselves and our children when driving or parking around the school site. This is especially important where children and parents are crossing Kipling Avenue to enter school.

Please note that children should be arriving at school at 8.45am at the earliest please.

GOVERNORS' CORNER:

World Water Day 2017: Why waste water? 22nd March

International Observance days or most commonly known as International awareness days are dates set to observe an international public health or ethical issue.

World water day is one such event, which draws our attention to **universal access to clean water, sanitation and hygiene**. It is meant to encourage people to learn about water related problems, raise awareness and take action to make a difference.

One of the big issues that we hear all the time is global water crisis, what it means is that for billions of people there is: not sufficient available water resources to meet the need. inadequate supply of clean water.

lack of sanitation (safe disposal of waste water).

water pollution, still the leading cause of death and disease.

The theme for this year was **'Why Waste Water'**; which is about **reducing** and **reusing** wastewater. **Are you a waster?**

Every time we use water we create wastewater. So what can we do to reduce and reuse wastewater?

The wasters guide to wastewater.

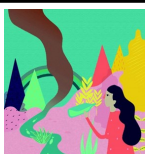
Here are some simple steps to reduce and reuse waste water and reduce pollution of our wastewater..

Reduce waste by turning off the tap while you're brushing your teeth or doing dishes or scrubbing vegetables. Otherwise you're just making wastewater without even using it!

Reduce polluting the water by putting rubbish, oils, chemicals, and food in the bin, not down the drain. The dirtier your wastewater, the more energy and money it costs to treat it.

Reuse wastewater by collecting used water from your kitchen sink or bathtub and using it on plants and gardens, and to wash your bike or car.

If **waste + water = wastewater**, then **wastewater - waste = water**
Raman Gurnani



PTA NEWS:

Hopefully you have all received a letter in book bags about the foreign coin collection which started last week. As Easter is a popular time to go abroad on holiday, we're asking for your help in donating any spare foreign coins you may have at the end of your holiday. We are also able to take **foreign notes, old British/Irish currency, farthings** and any **old obsolete currency, including Spanish Pesetas, German Marks etc.** Literally anything that is or was once money.

This will now be a permanent collection, along with the stamps, and you can find the bucket in the office, next the stamp box. So please have a hunt for any coins left over from holidays and business trips and pop them into the bucket so we can exchange them for funds for the PTA.

SAVE THE DATE: We are very excited to be holding a PTA quiz night at the school on **Friday 5th May**. This will be a licenced event with food included in the ticket price, so if you fancy a putting a team together to show off your general knowledge, then details of how to purchase tickets will follow shortly. This is an adult only event with a prize for the winning team. All money raised will go towards the PTA to help fund projects within the school.

Lisa Hernandez, PTA Chairman

There will be a staff-only day on Friday 26th May. This will coincide with the beginning of the half term break in the Summer Term. This means that school will be closed to children on this date.

SPORTS KIT:

Please can I ask for any remaining sports kit to be returned to school this coming week. This is particularly relevant for any cross-country or football kit which children may have at home.

OFFICE NOTICES:

The school office is spending an increasing amount of time chasing up payments for lunches, clubs etc. Can we please remind parents of the following expectations:

School Lunches - Class Catering do not offer credit and therefore school lunches must be paid for in advance. Moving forward if there are insufficient funds to pay for lunches then a request will be made for a packed lunch to be provided from home.

After school sports clubs - Once a letter has been sent home advising that a space has been allocated, a payment item is made available via ParentPay. Payment **MUST** be made before the first session takes place. Failure to do so may result the place being allocated to another child.

Music tuition - for children in Year 3 upwards, we have space for either 2 new Flute players or 2 new Clarinet players from Easter onwards. Lessons are currently £45 each term and are held during the school day. Hire of an instrument through Warwickshire Music is free of charge for the first year. Please see the school office for further details if this is something you are interested in.

Change of menu - for first week back after Easter break:

For week commencing 24th April the sandwich option will be Cheese on Monday and Ham on Tuesday.

Vegetable pie with cheddar mash is being permanently replaced on Mondays/Week 2 with Macaroni Cheese.

VOUCHERS:

Sainsbury's Vouchers are available to collect once again. The box to post any vouchers can be found in the main entrance hall. Please help us to collect as many as possible! Vouchers will be available this year from 25 January - 28 April. In previous years we have purchased a lot of valuable PE equipment with our vouchers.



SCHOOL BANK:

The Bank will be open before school from 8.30am onwards on each

Thursday morning. Once an account has been opened it can be serviced as you wish for one off deposits or for more frequent saving. If you would like any further information please come along to speak to the bank team on a Thursday morning. Thank you, the school bank team and HSBC. Any child can open an account once they have reached **seven years of age**.

