

**Warwick District Children & Family Centres Virtual Timetable (via Facebook)
Monday 30 November to Friday 4 December**

Morning activities at 10am.

Monday 30 November

Baby Time with Helen

Sing-a-long with Helen to your favourites!



(Communication & Language)

Tuesday 1 December

Toddler Songs with Liz

Sing and Sign with Liz to a variety of songs incorporating Makaton



(Communication & Language)

Wednesday 2 December

Baby Time with Helen

What's in the bag?



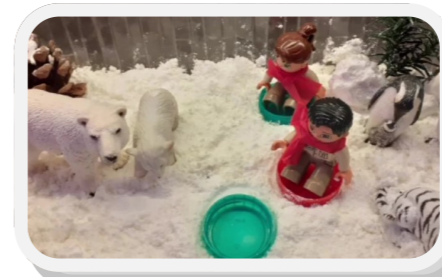
**Weaning
Tips**

(Exploring Materials)

Thursday 3 December

Toddler Time with Lynne

How to make fake snow



(Expressive Arts & Design)

Friday 4 December

Storytime with Sally



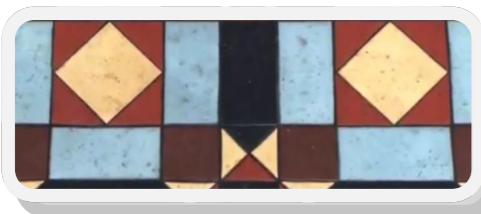
**Father
Christmas
needs a wee!**
By Nicholas Allan

(Language & Listening)

Afternoon activities at 2pm.

**Toddler Time with
Rebecca**

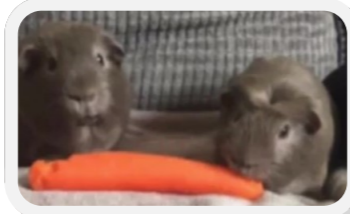
Let's play I-Spy Again!



(Understanding the World)

**Pets Corner with
Rebecca**

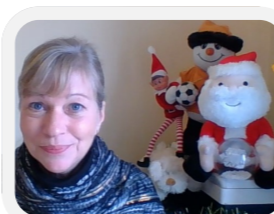
Letter to Santa Paws



(Understanding the world)

**Poetry Corner with
Jacqui**

**Letter to
Jack
Frost**



By Moira Andrew

(Language & Literacy)

**Toddler Time with
Anne**

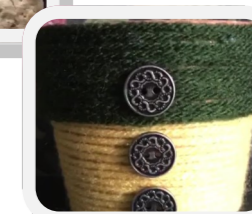
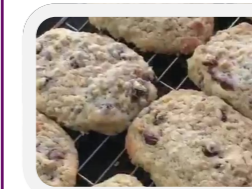
**Paper Plate
Christmas Tree
Craft Activity**



(Expressive Arts & Design)

**Parent LIFT with
Steph**

**Christmas
Gift Ideas**





Follow us on Facebook at: <https://en-gb.facebook.com/warwickchildrenscentres/>



Warwick District Children & Family Centres Virtual Timetable (via Facebook)



Family Information Service

01926 742274

Email: fis@warwickshire.gov.uk

www.warwickshire.gov.uk/fis

Providing information, advice and one-to-one support for families with children and young people aged 0-25 across Warwickshire

Early Help and Targeted Support Team

Contact Number:

01926 412412

Monday to Friday from 9:00am-4:00pm

Information and advice can also be found on the Children and Families pages of the Warwickshire website:

www.warwickshire.gov.uk/childrenandfamilies

Health Visiting & Midwifery Contact Details

Lillington Health Visitors: 01926 887309

Kingsway Health Visitors: 01926 626531

Warwick Gates Health Visitors: 01926 626531/626536

Kenilworth Health Visitors: 01926 852087

Dale Street Health Visitors: 01926 887309

Cape Road Warwick Health Visitors: 01926 400001 Ext 239

Warwickshire Health Visiting Text Chat Service: 07520 615293

Monday to Friday - 9am-5pm

Bluebell Clinic @ Warwick Hospital (Midwives): 01926 495321

Extn 6973, 6974 or 6977

Infant Feeding Team: 01926 626529

Other Useful Contact Details

Adult & Community Learning. Email: tanyaspeirs@warwickshire.gov.uk. Tel: 07584 521869 or 01926 736374

Citizens Advice Bureau. Lillington: 07990 070328. Stratford: 07825 654605. www.casouthwarwickshire.org.uk

Warwick District Foodbank: 07850 293383. www.warwickdistrict.foodbank.org.uk